



TRUCKEE MEADOWS PARKS FOUNDATION

AWARENESS • APPRECIATION • STEWARDSHIP



ANNUAL REPORT 2015

Meet the team

BOARD OF DIRECTORS



Colleen Wallace-Barnum
President



David Jickling
Vice President



Sarah Chvilicek
Treasurer



Jeff Bryant
Board Director



Stephanie Givens
Board Director



Lori Wray
Board Director

Judith Lockwood
Board Director

Dr. Stephan Bajo
Board Director

Dr. Jesse Clark
Board Director

Tina Nappe
Board Director

TMPF TEAM



Nathan Daniel
Executive Director



Jackie Meyer
VISTA Team Leader



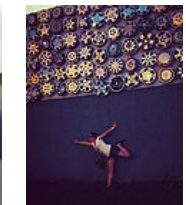
Belen Figueroa
Volunteer and Outreach Coordinator



Donald Lovejoy
Development Coordinator



Kelsey Mazur
Program Coordinator



Augustine Sughrua
Program Coordinator

Jamie Kennedy
Volunteer and Outreach Coordinator

Mo Loden
Development Coordinator

Nicole Kowalewski
Intern

NOTE FROM THE EXECUTIVE DIRECTOR

Thanks to a tremendous outpouring of community support in 2015, the TMPF team was able to accomplish a great deal for our parks. From our programs and events operating under the *Healthy Parks Healthy People: Truckee Meadows* initiative to our fiscal sponsorship efforts designed to privately fund park improvement projects,

we're proud of what we've accomplished and excited to do even more as we grow in 2016. On behalf of our board and AmeriCorps VISTA team members, thank you for helping us fulfill our mission to raise awareness and appreciation of our parks and to create opportunities for citizens to better steward our public lands.

AGENCY PARTNERS



Cover photo: Laura Lea Evans

Our Mission

Truckee Meadows Parks Foundation strives to improve the lives of northern Nevadans by enhancing the quality and sustainability of our local parks. We work to support parks and open spaces in the following ways:



Park-based educational and recreational programs.

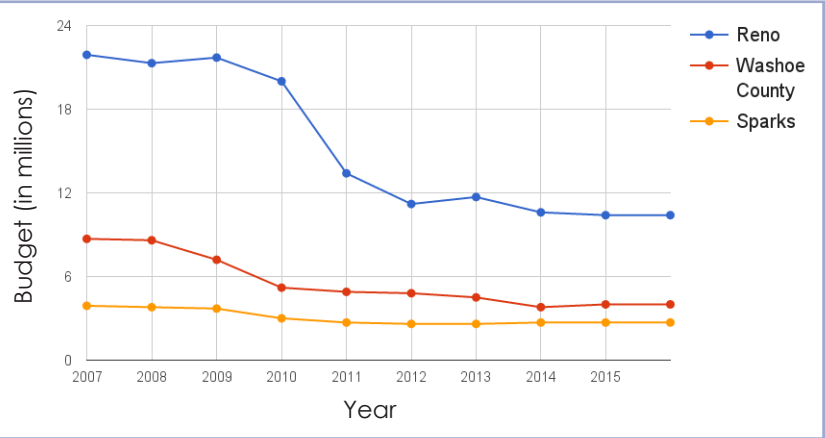
Private financial support for new and existing park infrastructure.

Serving as a mechanism through which citizens can advocate for their parks.

IMPORTANT DATES

Incorporated: 26 April 2012 | **501 (c) (3):** 15 January 2013 | **Began Operation:** 21 April 2013

PARK FUNDING CUTS



Since the Great Recession, park funding in Truckee Meadows has been dramatically reduced.

GOALS & OBJECTIVES

- Strengthen the bond between citizens and their parks.
- Provide innovative park-based programs for families, community groups, and schools.
- Inspire citizens to take a proactive volunteer role in the preservation and improvement of our parks.
- Collaborate with local non-profits, community groups, and park user groups.
- Serve as fiscal sponsor for community-led initiatives to enhance park infrastructure.

2015 by the NUMBERS

186
active members

+81
new members

\$12,125
in membership dues

Number of TMPF members has grown **8x** larger since 2013

Promote other park improvements in the Truckee Meadows

Raise awareness of parks in the Reno, Sparks, and Washoe County areas

Advocate for the revitalization of the park funding budgets

1,600+ community members receive the monthly e-newsletter

The Parks Foundation secured **\$275,839** to support park-based programs and events

TMPF partners with community members, municipal agencies, and local businesses to fundraise for specific park projects.

\$46,000
Raised for the Reno Tennis Center Improvement Project

\$67,000
Raised for the Virginia Lake Dog Park Restoration Project

PROGRAMS



STUDENT STEWARDS PROGRAM

From February through June 2015, TMPF brought 250 3rd-6th grade students from Title I schools into their neighborhood parks to get them engaged in citizen science projects. During the 2015-2016 school year, we will work with over 800 3rd-12th grade students from Title I schools. These students become more academically engaged and build their sense of park ownership. Since its inception in February 2015, we have worked with 814 students from six different economically disadvantaged schools and 28 classrooms. All the data collected is used in on-going citizen science projects!



DISCOVER YOUR PARKS WALKS

For 13 weeks each summer, TMPF offers free, one-mile, interpretive walks at various Washoe County, Reno, and Sparks parks. Since the program's inception in 2014, 940 community members have joined TMPF to get outdoors and learn about the natural and cultural history of the area. In addition, the series included eight special walks, which serve our senior community.

508 participants in 2015:

May Older Americans Month: **66**

Summer 2015 walks: **388**

Oct/Nov Older Americans Walks: **54**



TRUCKEE MEADOWS TRAILS CHALLENGE

Since 2013, over 650 individuals have joined the Trails Challenge. The Challenge is a self-guided, goal-oriented program that encourages people to explore the more than 200 parks and trails in the Truckee Meadows. Each month TMPF offers a two-mile, interpretive hike for Trails Challenge members.

& EVENTS



PARKS REPHOTOGRAPHY PROJECT

The rephotography project has two components: contemporary and historical. Contemporary rephotography creates a continuous, qualitative record of changes in our parks, while historic rephotography documents change over time. In 2016, the historical rephotography exhibition is scheduled to be on display at five Washoe County libraries. In addition, the project is an annual part of Reno's July Artown. There are more than three dozen Rephotography Site Stewards who volunteer to photograph area parks each season.

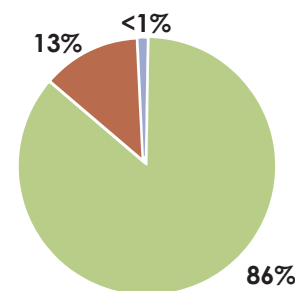


EVENTS

The Parks Foundation held nine events throughout the year for both TMPF members and the community at large. These events impacted public lands by increasing citizen awareness and appreciation of the values inherent in our parks. In 2015, we held our *Explore the Outdoors 5K Fun Run*, a halloween-themed fundraiser entitled *A Night with Nosferatu*, and the *Quail Quest: Truckee Meadows Scavenger Hunt*. We began our quarterly lecture series, *TMPF Talks* and held several smaller events throughout the year including *Pitchin' in the Parks* and a mini bioblitz at MLK Jr. Memorial Park.

740 people at nine events

2015 EXPENSES



Programming
\$217,044

- Student Stewards
- TM Trails Challenge
- Parks Rephotography
- 5k Fun Run & Walk
- Quail Quest
- **and more**

Administrative
\$32,646

- Utilities
- Office Equipment
- Taxes & Licenses
- Telecommunications
- **and more**

Fundraising
\$897

- Postage
- Printing

Total expenses = \$250,587

Contact Us



Address: 50 Cowan Drive
Reno, NV 89509
Hours: 9:00 am — 4:00 pm,
Monday through Friday
Phone: (775) 453-0698
Email: info@tmparksfoundation.org



“This is one of the most well run and worthwhile community partnerships I have been a part of!”

Jonathon Hughes
Teacher at Bernice Mathews Elementary



Membership Registration

Please fill out the following information to become an official Truckee Meadows Parks Foundation member

Name: _____ Phone #: _____
Email: _____
Address: _____

Annual membership benefits include:

- Member only events
- E-newsletters
- Access to fun, park-based projects
- The knowledge that you're part of an organization dedicated to supporting parks in our region

Please accept my membership contribution of:

\$1,000 or more \$ _____ to join as a Park Patron
\$500 ☐ \$250 ☐ \$150 ☐ \$100 ☐ \$75 ☐ \$50 ☐ \$ _____

CHECKS may be made payable to:
Truckee Meadows Parks Foundation

CREDIT CARD information:

Card #: _____
Amount: \$ _____ CC Type (i.s. Visa): _____
Exp: ____ / ____ CSV Code: _____
Signature: _____

CASH AMOUNT: \$ _____

Mail to: TMPF, 50 Cowan Dr., Reno, NV 89509

Referred by: _____

We will email your membership information within 10 business days.

TMPF is a private, non-profit 501 (c) (3) organization

THANK YOU and **WELCOME!**

