

Macroinvertebrate Adults Key

GROUP 1 – Young are Very Intolerant of Pollution



Stonefly Adult



Mayfly Adult



Riffle Beetle Adult



Caddisfly Adult



Dobsonfly Adult



Water Penny Adult



Right-Handed Snail

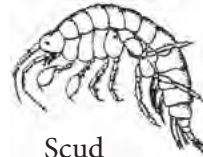
GROUP 2 – Young are Moderately Intolerant of Pollution



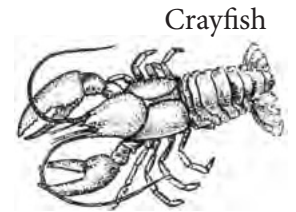
Damselfly Adult



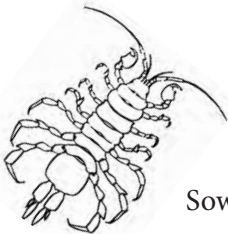
Dragonfly Adult



Scud



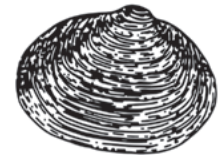
Crayfish



Sowbug



Crane fly Adult



Clam/Mussel

GROUP 3 – Young are Fairly Tolerant of Pollution



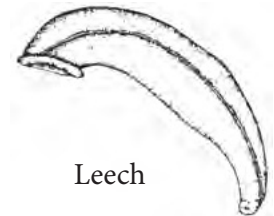
Midge Adult



Planaria



Black Fly Adult



Leech

GROUP 4 – Young are Very Tolerant of Pollution



Aquatic Worms



Left-Handed Snail



Hoverfly (Rat-tailed maggot adult)



Blood Midge Adult

Macroinvertebrate Adults Key

GROUP 1 – Young are Very Intolerant of Pollution



Stonefly Adult



Mayfly Adult



Riffle Beetle Adult



Caddisfly Adult



Dobsonfly Adult



Water Penny Adult



Right-Handed Snail

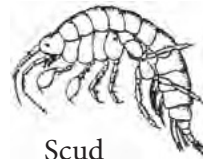
GROUP 2 – Young are Moderately Intolerant of Pollution



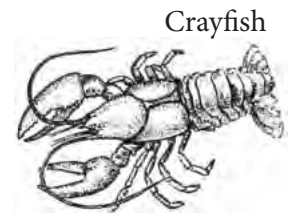
Damselfly Adult



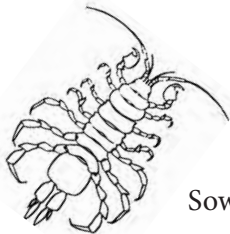
Dragonfly Adult



Scud



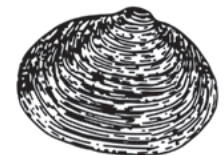
Crayfish



Sowbug



Crane fly Adult



Clam/Mussel

GROUP 3 – Young are Fairly Tolerant of Pollution



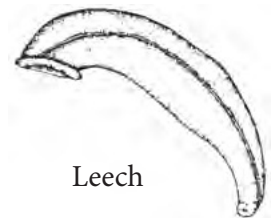
Midge Adult



Planaria



Black Fly Adult



Leech

GROUP 4 – Young are Very Tolerant of Pollution



Aquatic Worms



Left-Handed Snail



Hoverfly (Rat-tailed maggot adult)

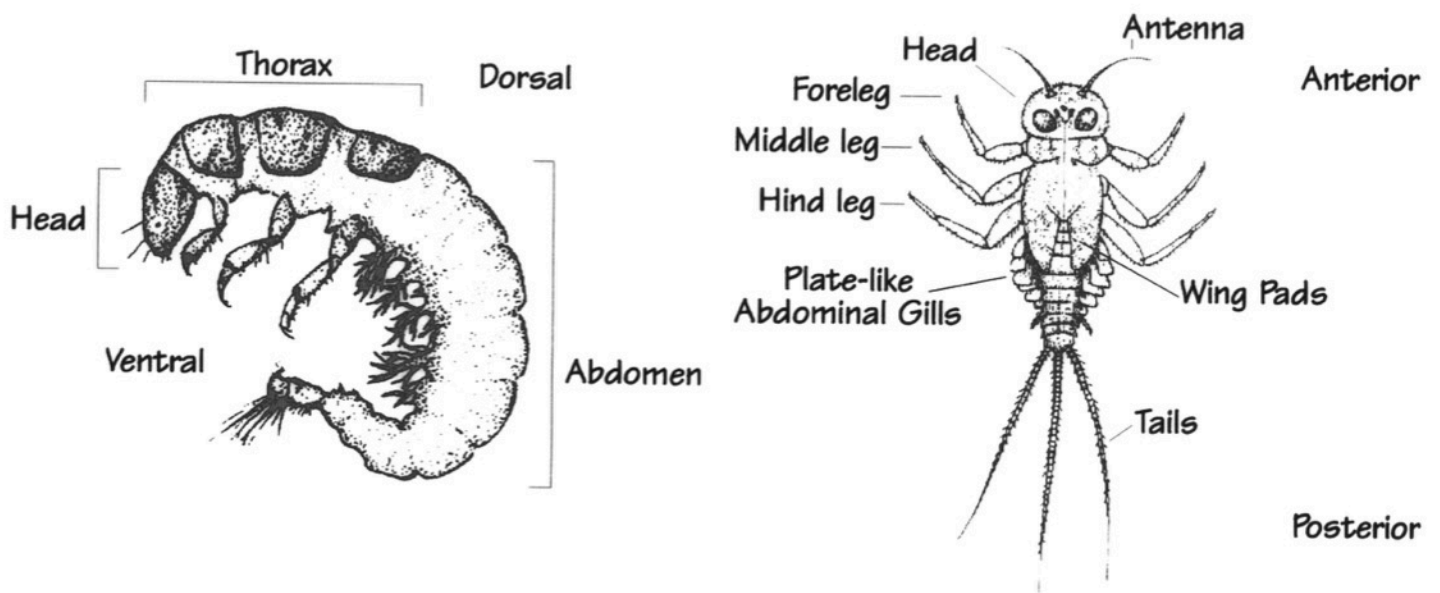


Blood Midge Adult

What Do They Look Like?

A simple key to benthic macroinvertebrates is provided in Appendix B. The organisms are grouped according to pollution tolerance, starting with the most intolerant families. Figure 30 below (from the *GREEN Standard Water Monitoring Kit*) may help you identify the distinguishing features of many of the organisms.

Figure 30



Aquatic Food Web (from *Pond & Stream Safari*, Cornell Cooperative Extension)

Figure 26

